

TRAIL INFORMATION

Trails are unpaved and in some places can be sandy, bumpy, or wet. Trails pass through uplands once dominated by Longleaf pine & wiregrass. Conversion to pine plantation and decades of fire suppression have resulted in a mixture of forest types.

Stay on marked trails to avoid trespassing on adjacent private property, which may have hunters. Hikers, bikers, and equestrians share the trail - use courtesy when interacting with other trail users.



PRESERVE CLOSSES AT DARK

In case of emergency, you are located at 3208 NW 186th St. Newberry, FL 32669.

SHERIFF, FIRE, MEDICAL

Alachua County Emergency Dispatch: 911

POACHING, DUMPING, OR ARTIFACT LOOTING

Florida Fish & Wildlife Conservation Commission: (888) 404-3922

For non-emergency, trail maintenance, or land management issues and to volunteer

Alachua Conservation Trust: (352) 373-1078

OUR MISSION

Alachua Conservation Trust (ACT) is committed to protecting the natural, historic, scenic, and recreational resources in and around North Central Florida. ACT protects land through purchase, donation, and conservation easements.

Alachua Conservation Trust is a non-profit land trust that works with landowners to protect our special places. Since 1988, ACT has directly acquired more than 20,000 acres in North Central Florida for public parks and nature preserves and has helped private landowners achieve their conservation goals on thousands of additional acres.

For more information, visit or contact us at:



PRAIRIE CREEK LODGE

-  7204 SE County Road 234
Gainesville, FL 32641
-  (352) 373-1078
-  info@AlachuaConservationTrust.org
-  www.AlachuaConservationTrust.org



SAARINEN PRESERVE





Trail Guide



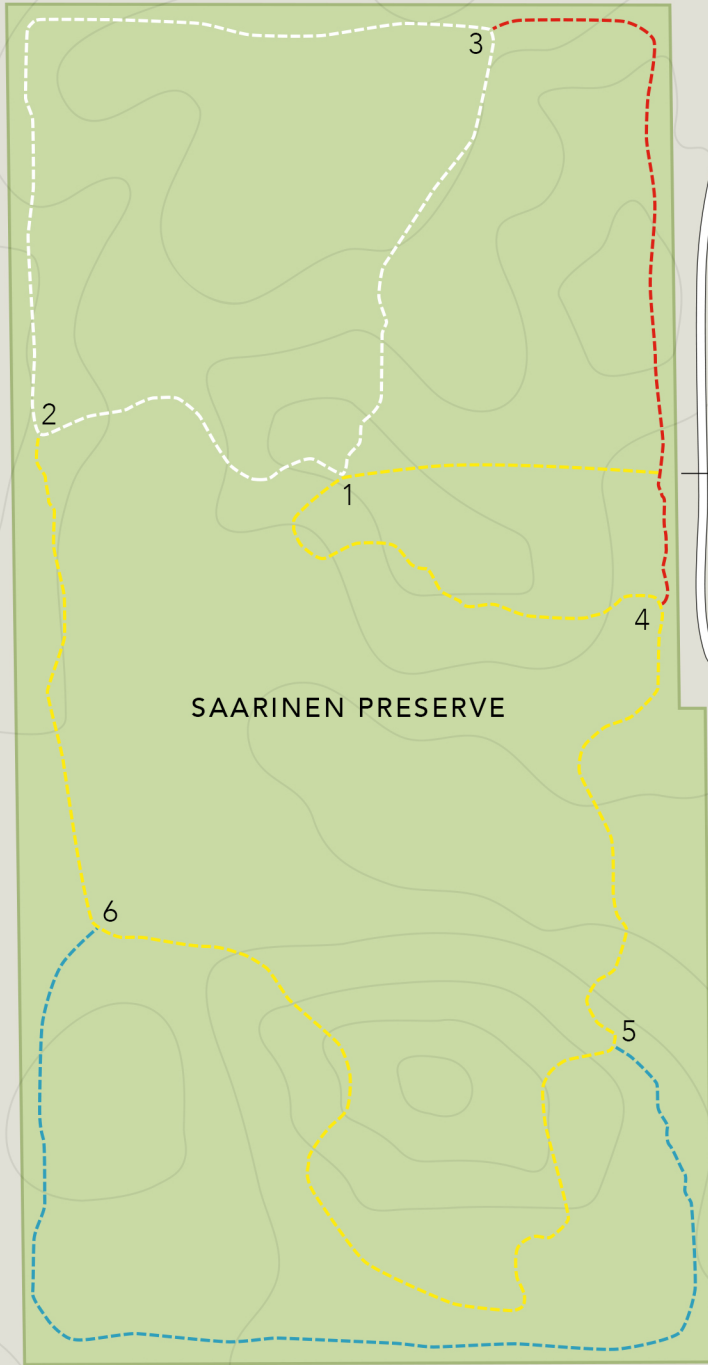
PAINTING: JJ AUDUBON

SAARINEN PRESERVE

LEGEND

-  YELLOW TRAIL -1.1 mi
-  BLUE TRAIL -0.5 mi
-  WHITE TRAIL -0.7 mi
-  RED TRAIL -0.3 mi
-  Conservation Lands
-  Private Lands

Landscape has been significantly altered by people for more than a century. Alachua Conservation Trust is restoring portions of the preserve to their native plant communities. Please respect signage for ecologically sensitive areas.



#3208 NW 186th St.
Newberry, FL 32669

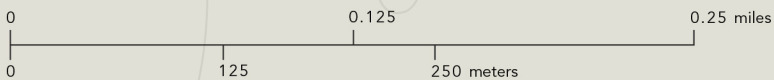
~16 miles
to downtown Gainesville →

NW 32ND AVE

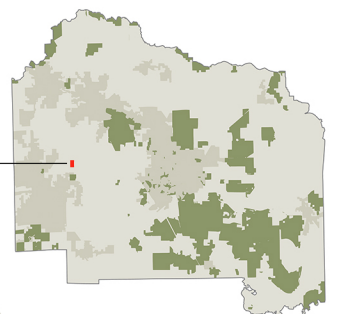
PLEASE
respect private
property boundaries as
hunting may be in
progress.

NW 182ND ST

NW 28TH PL



ALACHUA COUNTY



conservation lands
in dark green &
urban areas in brown